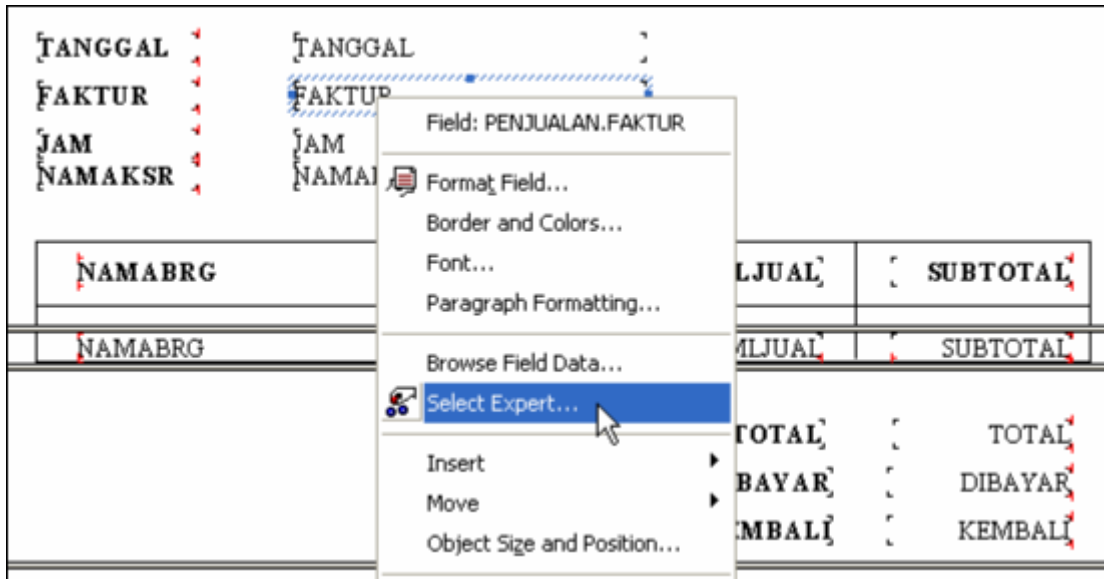


Memanggil Faktor Terakhir

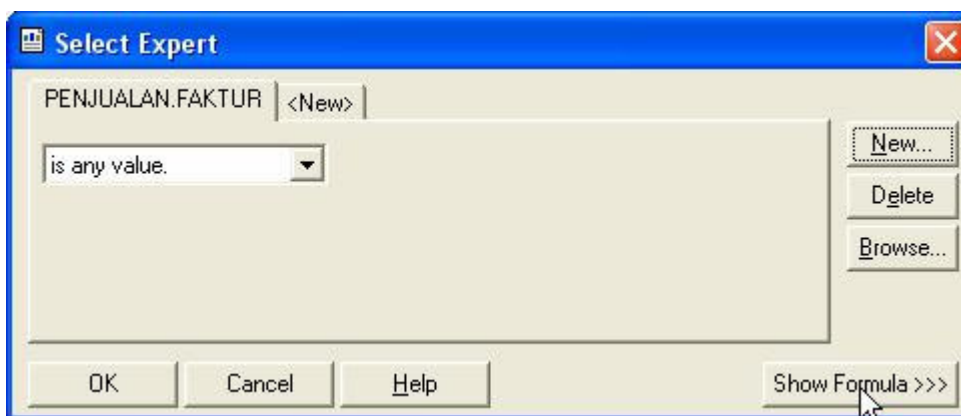
Buka file laporan

Klik kanan field Faktur

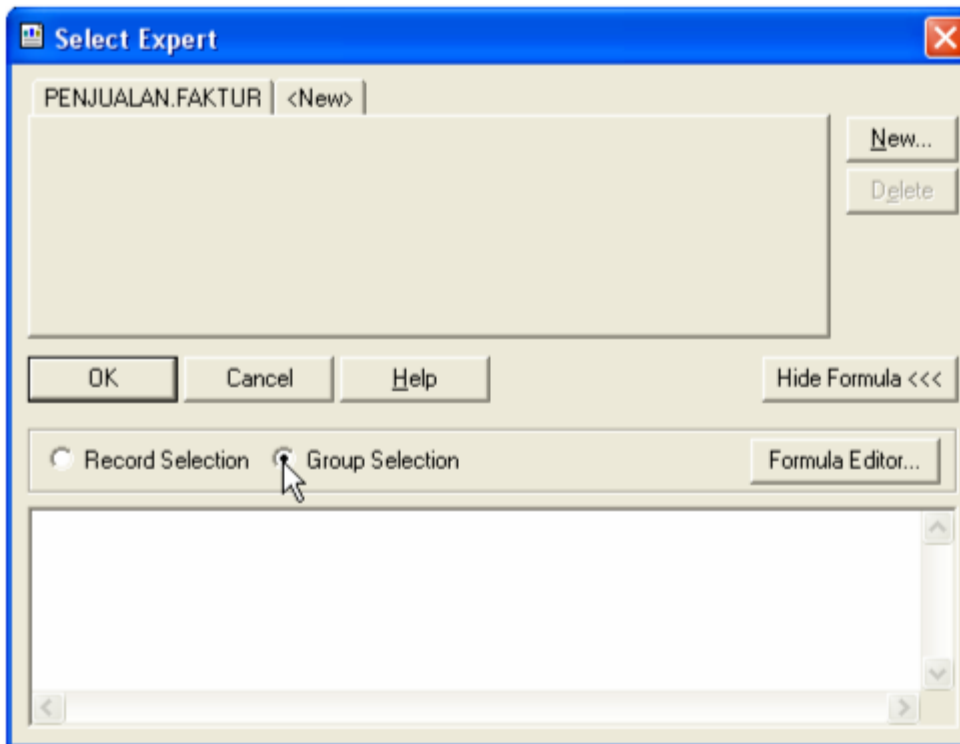
Pilih select expert



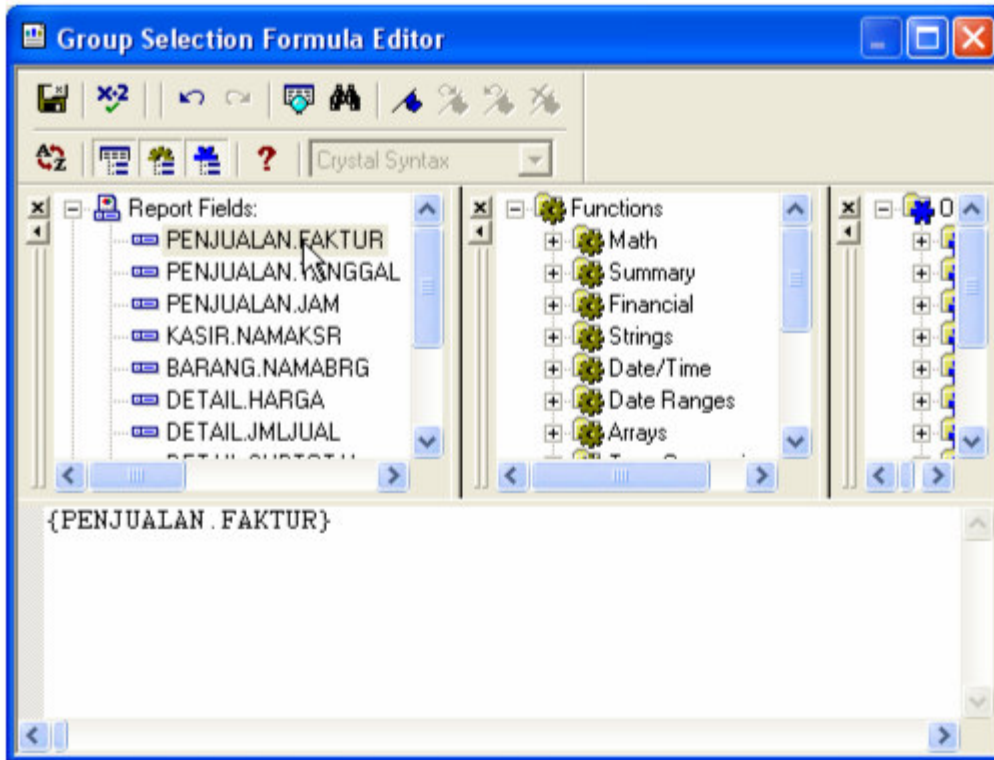
Klik show formula



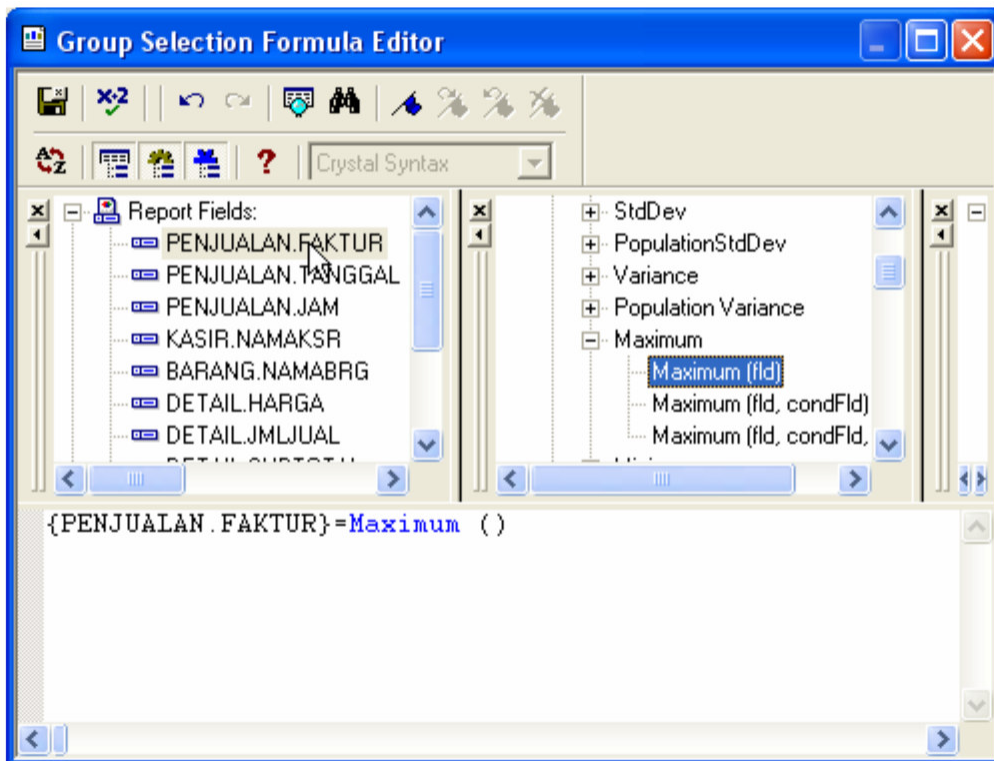
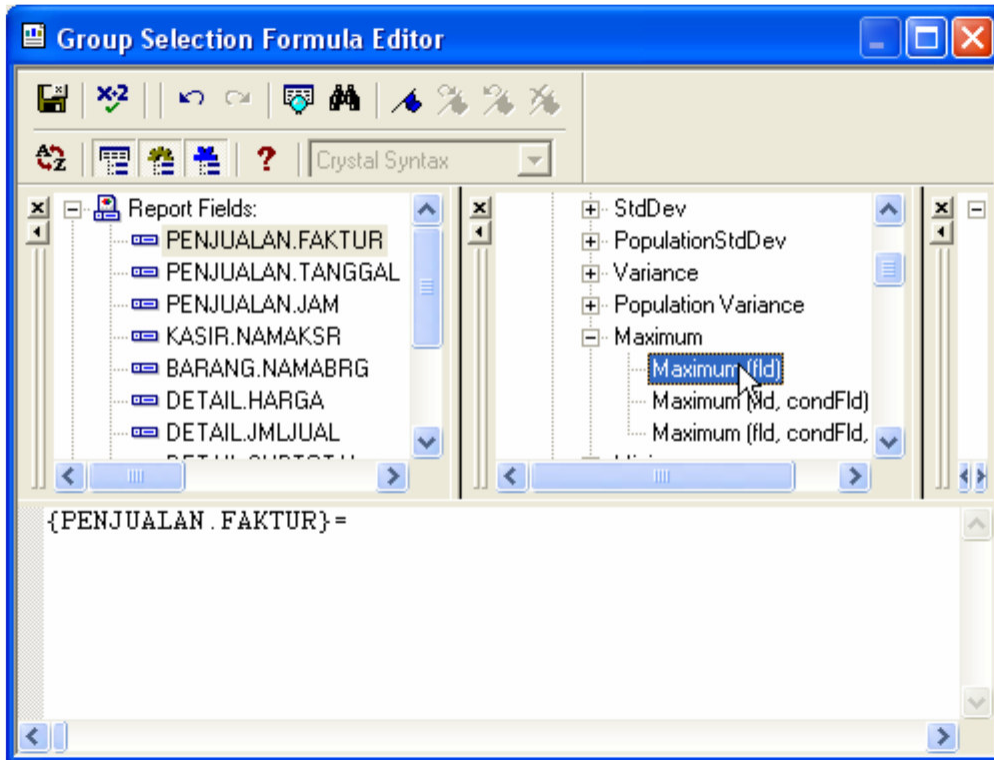
Klik group selection



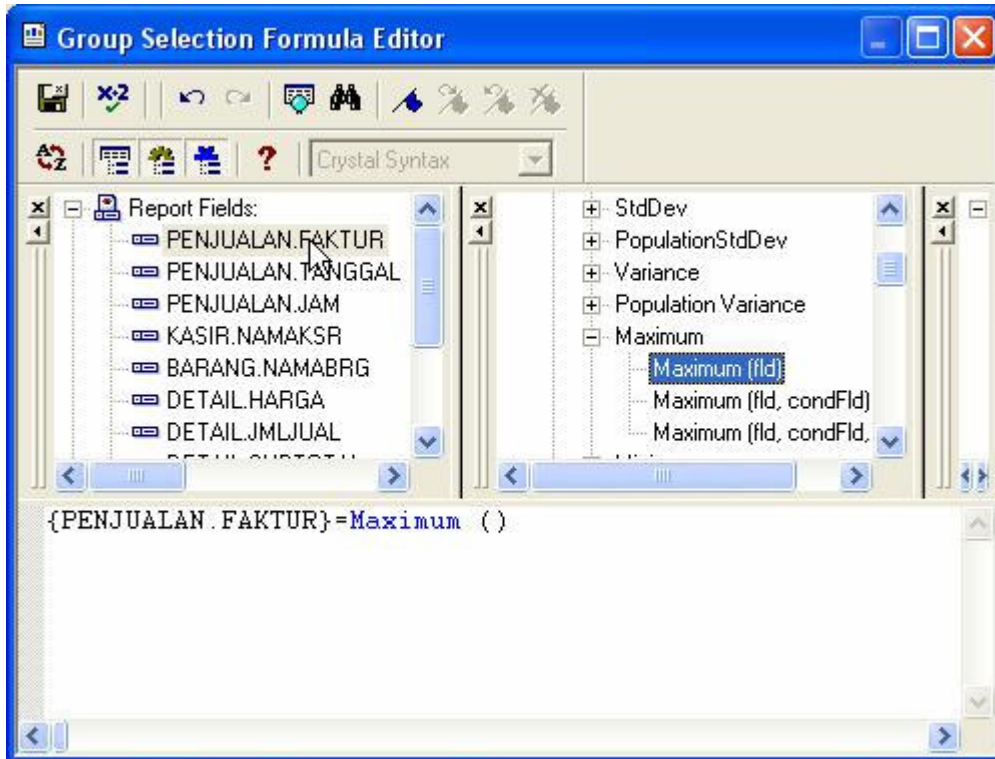
Klik formula editor
Double klik penjualan.faktur



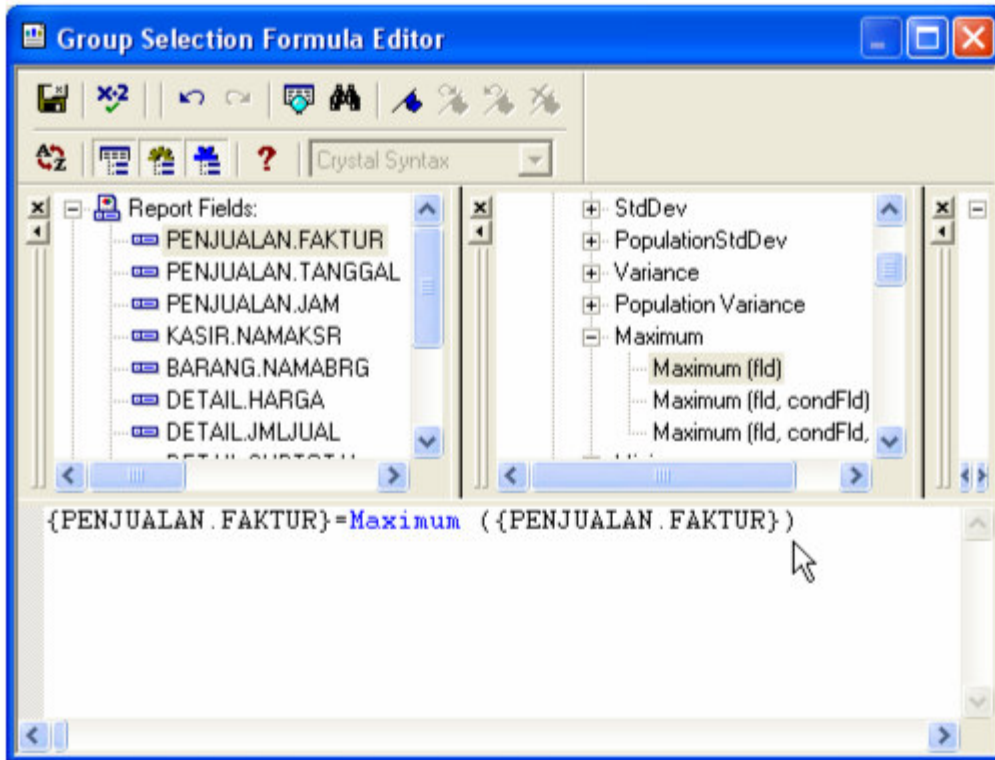
Ketik tanda = (sama dengan)
Double klik maximum(fld)



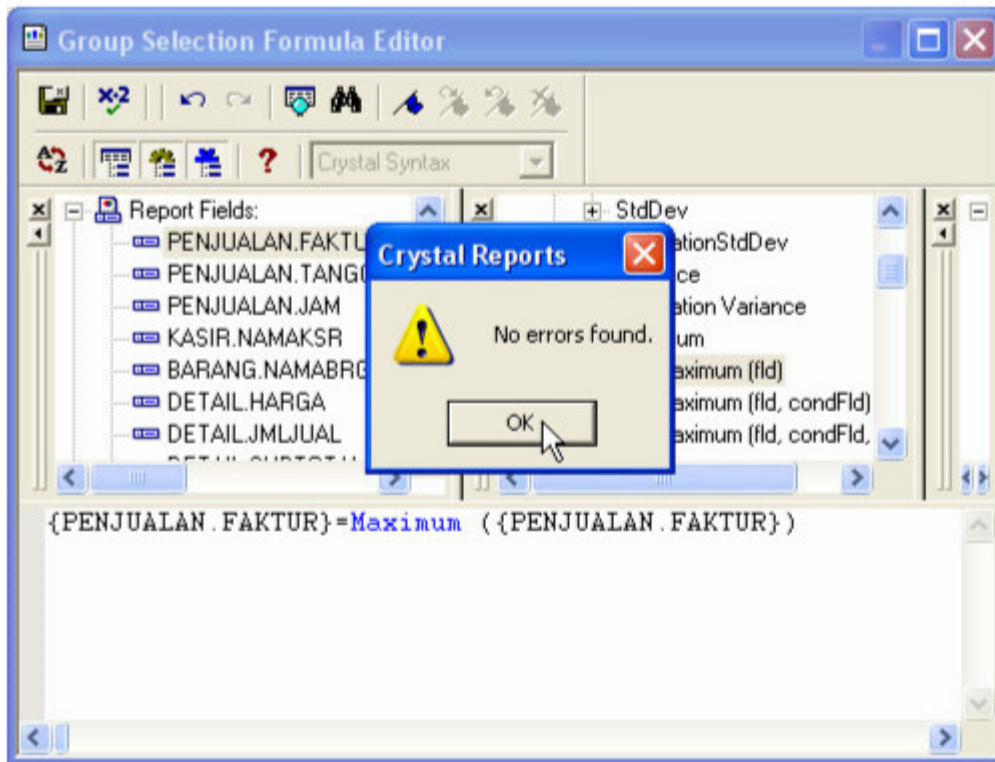
Double klik lagi penjualan.faktur



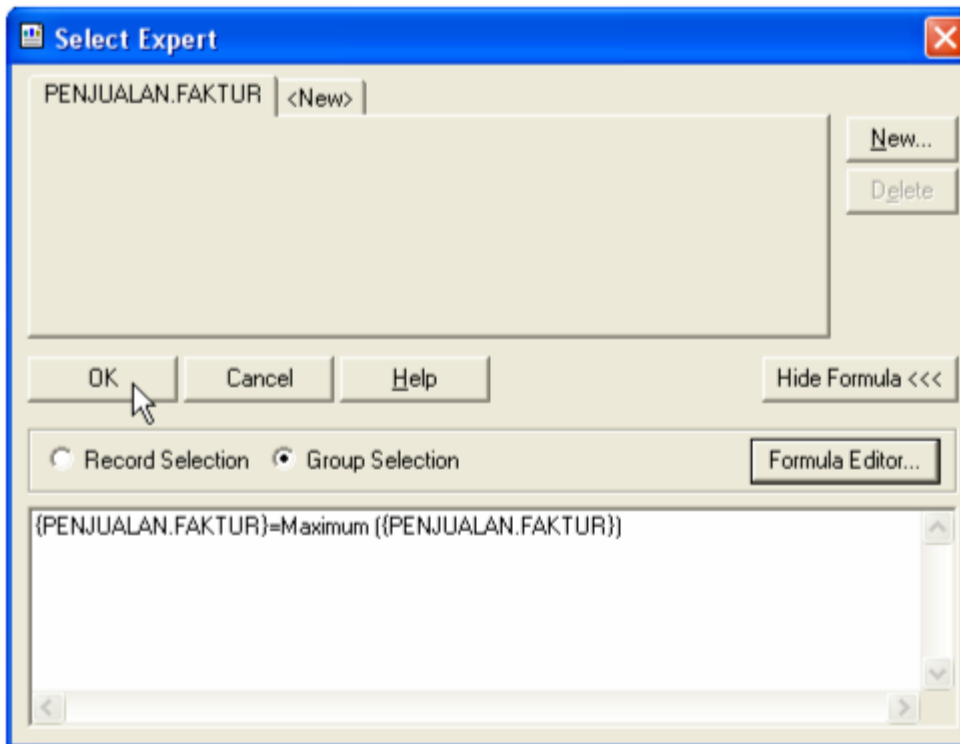
Hasil :



Klik ikon check



Klik save and close
Klik OK



Simpan file laporan
Jalankan program
Crystal report akan memanggil data paling akhir
Cara lain : boleh juga rumus ini diketik secara manual